

Retrofitting M60/M70

Manual

Wall and 19"

English

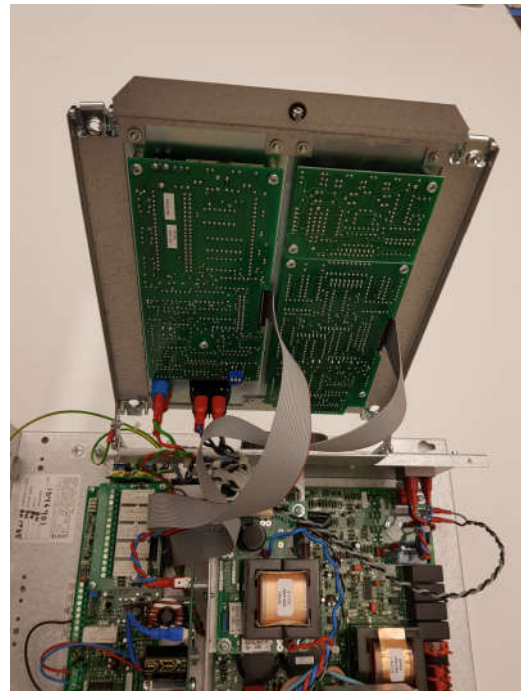
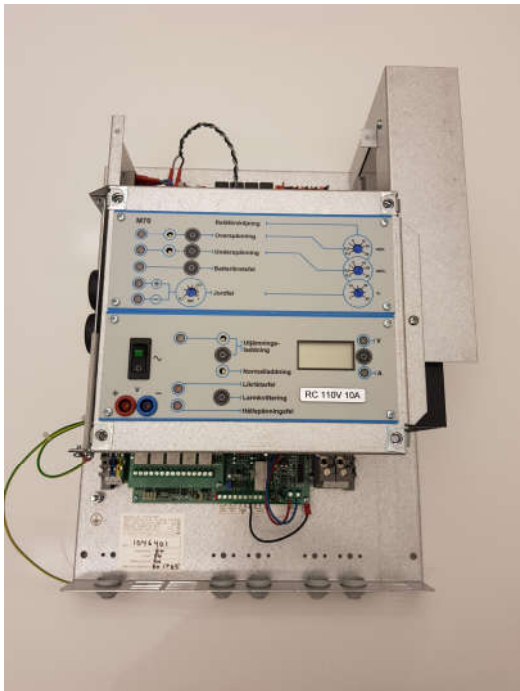
Retrofitting monitoring M60/M70 for wall model

First turn off and disconnect the rectifier from all voltage supplies!

This procedure is only allowed for knowledgeable and authorized personnel!

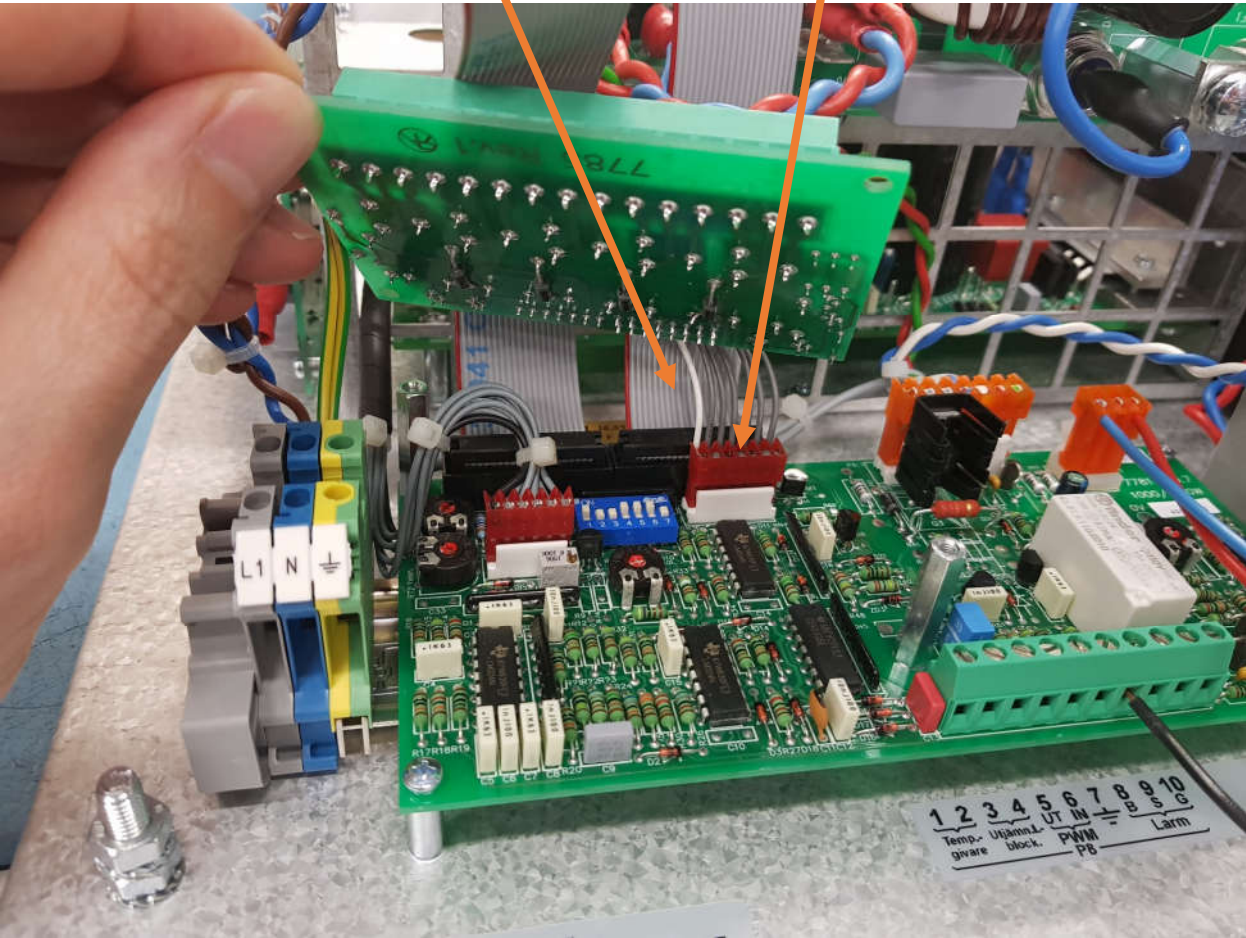
Remove rectifier cover and open the front door.

Remove blind plate and replace with the monitoring board.

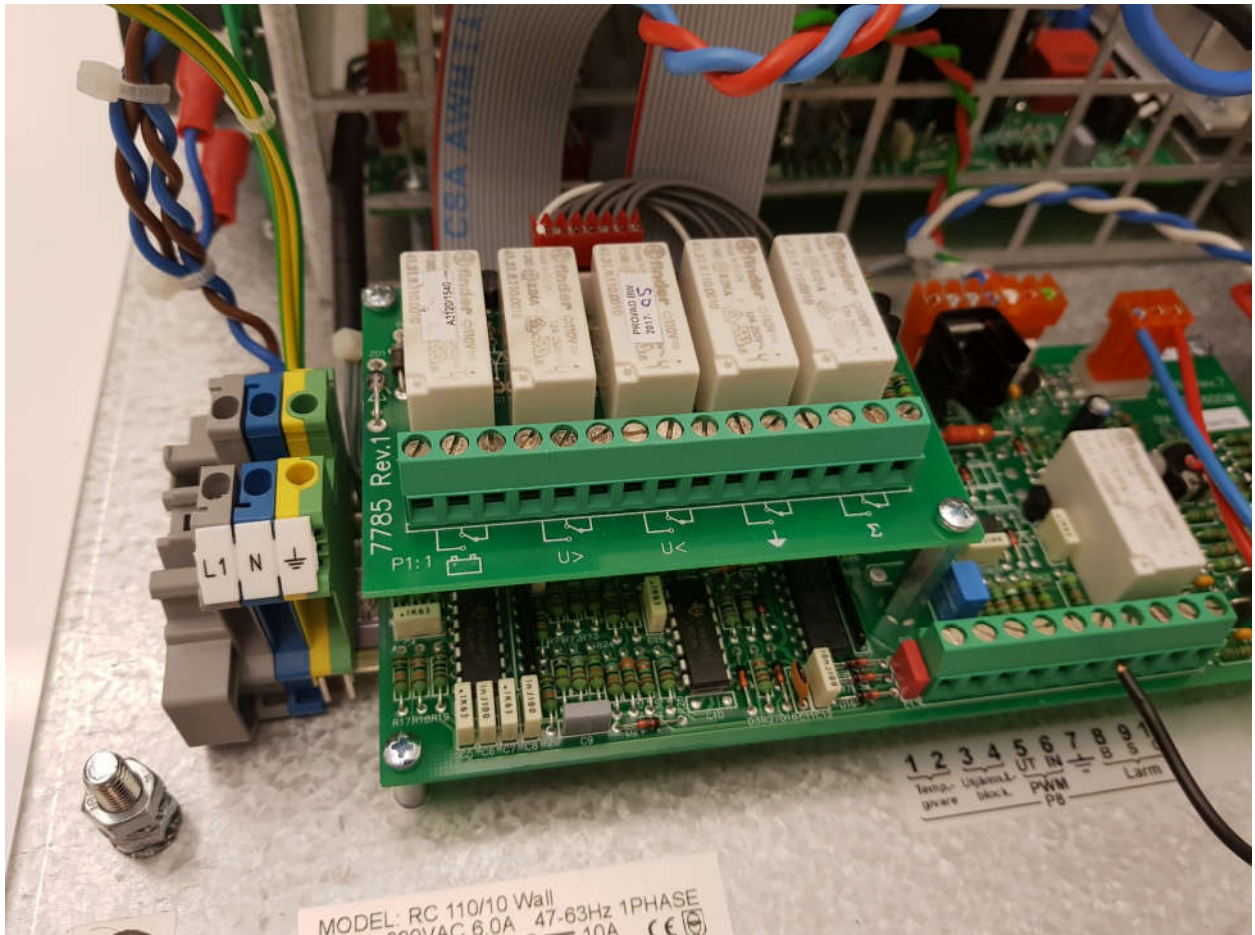


Connect ribbon cable to connector P2

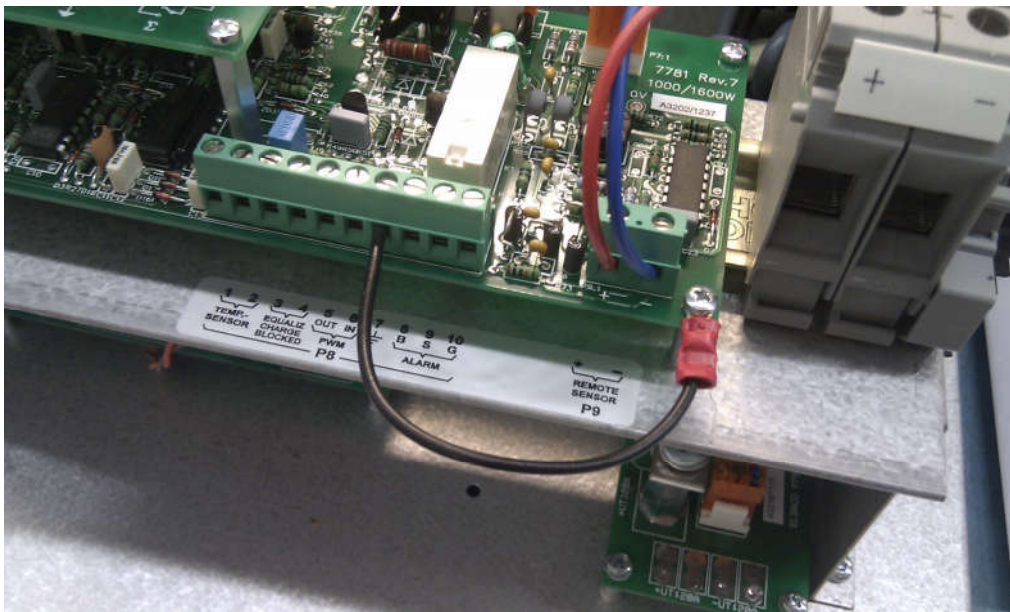
Connect relay cable to P3 (only M70)



Attach relay board onto the spacers (only M70).



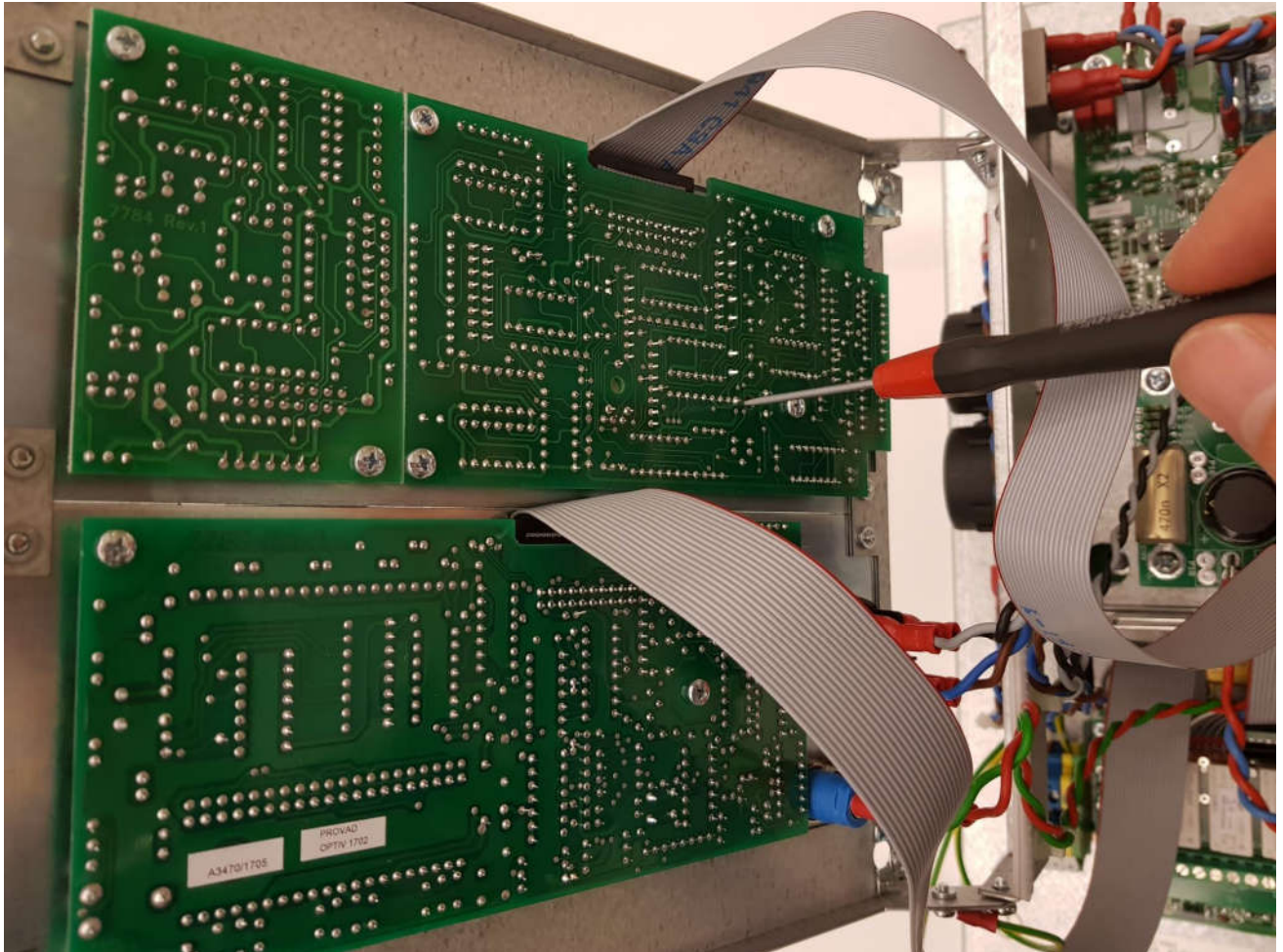
**Connect the enclosed cable between pin 7 and chassis/earth
if earth fault monitoring is to be enabled.**



After turn on of the rectifier, adjust all settings according to the manual.

The battery test level is adjusted using screw driver according to the picture below (potentiometer RT3).

Close the front door and reattach the rectifier cover.

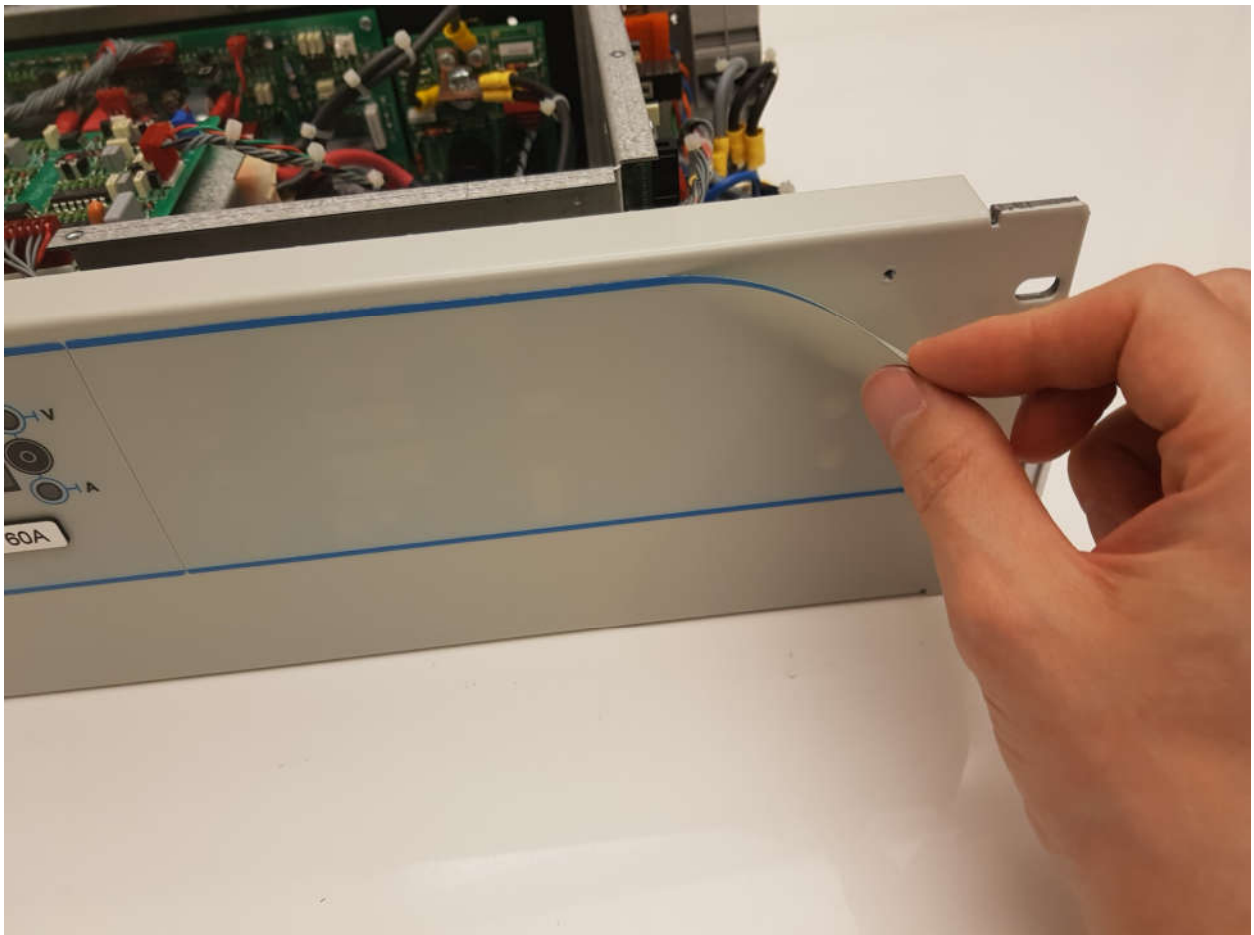


Retrofitting monitoring M60/M70 for 19" model

First turn off and disconnect the rectifier from all voltage supplies!

This procedure is only allowed for knowledgeable and authorized personnel!

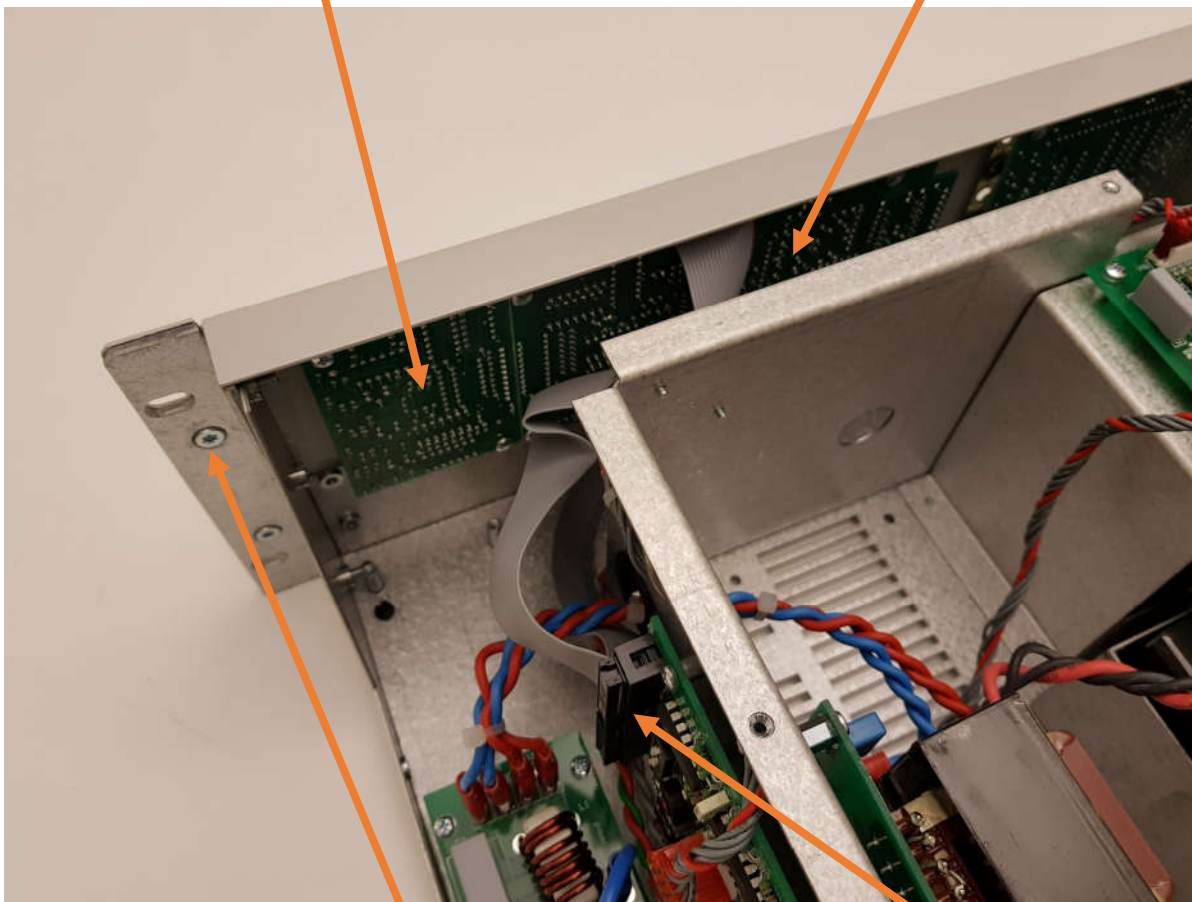
Pull off the old overlay.



Remove the cover and front panel of the rectifier and mount the board for monitoring and the board for relay delay (only M70).

Board for relay delay (only M70)

Board for monitoring (M60/M70)

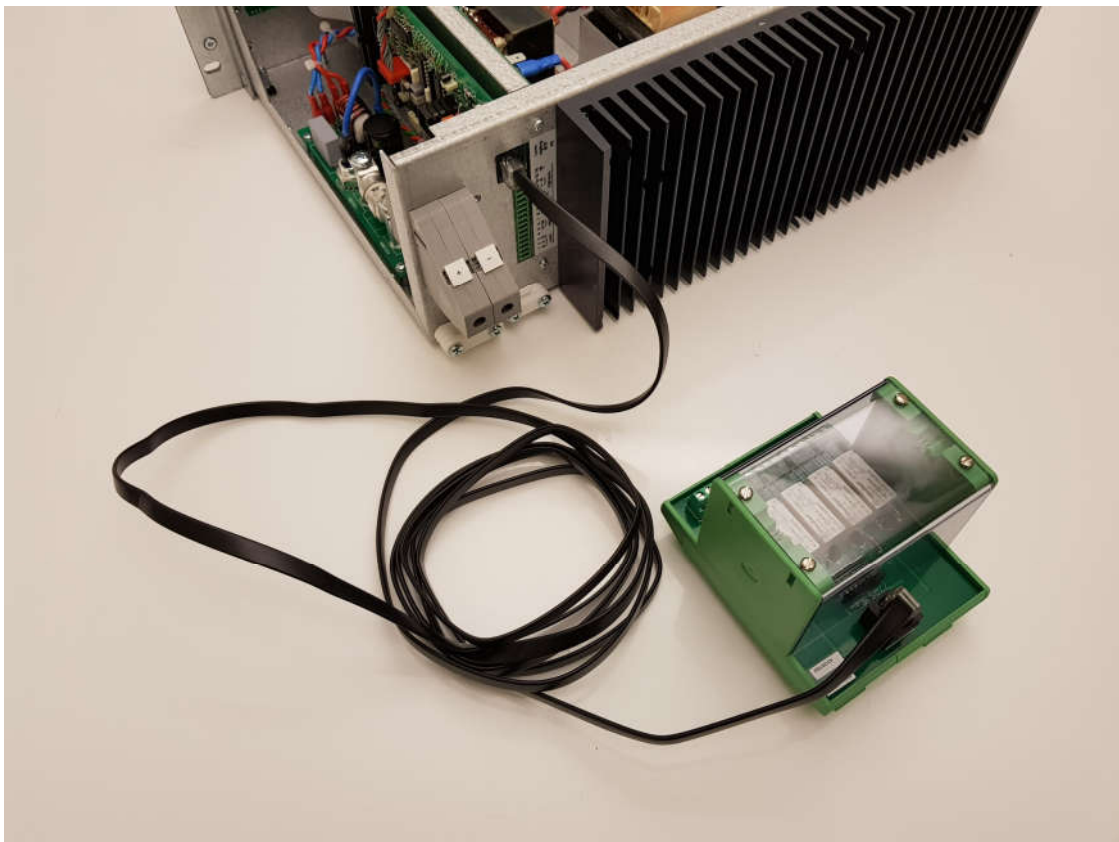


Unscrew these screws (4 pcs) in order to remove front panel
P2

Connect ribbon cable to

Reattach the front panel and cover.

Connect relay box (only M70).



**Connect the enclosed cable between pin 16 and chassis/earth
if earth fault monitoring is to be enabled.**



Turn on the rectifier and adjust the battery test level (potentiometer RT3 according to picture below) before attaching the new overlay. Adjust during battery test in progress (can be started with the button). See manual for more information.



Attach the new overlay.
Adjust all settings according to manual.

